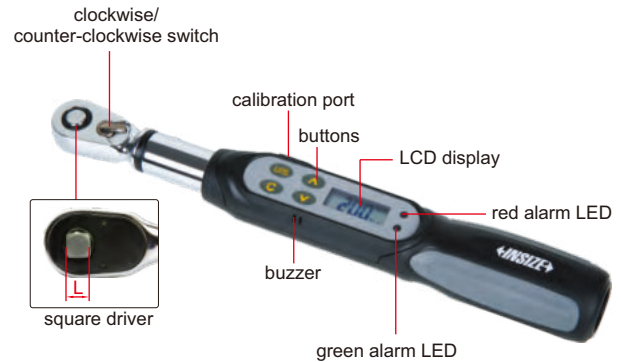




SMALL RANGE DIGITAL TORQUE WRENCHES

- Clockwise and counter-clockwise operation
- Unit: N.m, in.lb, ft.lb, kg.cm
- Peak and track working modes
- Target torque value can be set, with audible and visible alarm:
 - Green LED light on and buzzer sounds when target torque value is 90%~100% of target torque
 - Red LED light on and buzzer sounds when target torque value is reached
- Power off automatically in 5 minutes without any operations
- Non-slip grip handle
- With overload record (once the torque reaches 110% of the maximum range)



IST-WP20

SPECIFICATION

| Code | IST-WP6 | IST-WP12 | IST-WP20 |
|-------------------|-------------------|-----------|----------|
| Range | 1.2~6N.m | 2.4~12N.m | 4~20N.m |
| Accuracy | clockwise | ±3% | ±3% |
| | counter-clockwise | ±4% | ±4% |
| Resolution | 0.001N.m | 0.01N.m | 0.01N.m |
| Square driver (L) | 1/4" | 1/4" | 1/4" |
| Power supply | 1×AAA battery | | |
| Length | 260mm | 260mm | 260mm |
| Weight | 430g | 430g | 430g |

OPTIONAL ACCESSORY

| | |
|-------------------|--------------|
| Calibration cable | IST-SD-CABLE |
|-------------------|--------------|

OPTIONAL ACCURACY:
CLOCKWISE: ±1%
COUNTER-CLOCKWISE: ±2%
ONLY FOR RANGE 6~850N.m



DIGITAL TORQUE WRENCHES

- Clockwise and counter-clockwise operation
- Unit: N.m, in.lb, ft.lb, kg.cm
- Peak and track working modes
- Target torque value can be set, with audible and visible alarm:
 - Green LED light on and buzzer sounds when torque value is 90%~100% of target torque
 - Both green and red LED light on and buzzer sounds when target torque value is reached
- Power off automatically in 5 minutes without any operations
- Non-slip grip handle
- With damp record
- With overload record (once the torque reaches 110% of the maximum range)



IST-W135A



SPECIFICATION

| Code | Range | Accuracy | Resolution | Square driver (L) | Power supply | Length | Weight |
|------------|-------------|--|------------|-------------------|----------------|--------|--------|
| IST-W30A | 6~30N.m | clockwise: ±2% counter-clockwise: ±3% | 0.01N.m | 1/4" | 2×AA batteries | 390mm | 830g |
| IST-W135A | 27~135N.m | | 0.1N.m | 3/8" | | 415mm | 950g |
| IST-W200A | 40~200N.m | | 0.1N.m | 1/2" | | 530mm | 1.4kg |
| IST-W340A | 68~340N.m | | 0.1N.m | 1/2" | | 650mm | 1.6kg |
| IST-W500A | 100~500N.m | clockwise: ±2.5% counter-clockwise: ±3.5% | 0.1N.m | 3/4" | | 950mm | 2.1kg |
| IST-W850A | 170~850N.m | | 0.1N.m | 3/4" | | 1220mm | 2.55kg |
| IST-W1200A | 240~1200N.m | | 1N.m | 1" | | 1800mm | 13kg |
| IST-W1500A | 300~1500N.m | | 1N.m | 1" | | 1800mm | 13kg |
| IST-W2000A | 400~2000N.m | 1N.m | 1" | 1800mm | 14kg | | |

OPTIONAL ACCESSORY

| | |
|-------------------|-------------|
| Calibration cable | IST-W-CABLE |
|-------------------|-------------|

SHORT HANDLE DIGITAL TORQUE WRENCHES



- Clockwise and counter-clockwise operation
- Unit: N.m, in.lb, ft.lb, kg.cm
- Peak and track working modes
- Target torque value can be set, with audible and visible alarm:
 - Green LED light on and buzzer sounds when torque value is 90%~100% of target torque
 - Both green and red LED light on and buzzer sounds when target torque value is reached
- Power off in 5 minutes automatically
- Non-slip grip handle
- With damp record
- With overload record (once the torque reaches 110% of the maximum range)



IST-WS60



SPECIFICATION

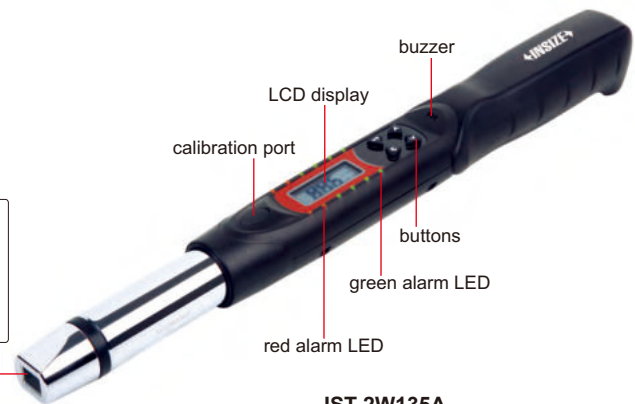
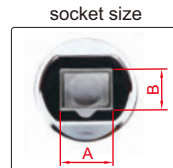
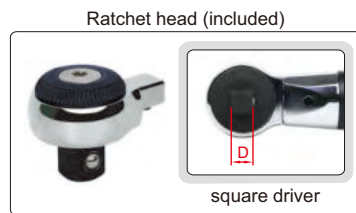
| Code | IST-WS30 | IST-WS30A | IST-WS60 | IST-WS85 |
|-------------------|-------------------|-----------|----------|----------|
| Range | 6~30N.m | 6~30N.m | 12~60N.m | 17~85N.m |
| Accuracy | clockwise | ±3% | | |
| | counter-clockwise | ±4% | | |
| Resolution | 0.01N.m | 0.01N.m | 0.01N.m | 0.1N.m |
| Square driver (L) | 1/4" | 3/8" | 3/8" | 3/8" |
| Power supply | 2×AAA batteries | | | |
| Length | 215mm | 215mm | 225mm | 271mm |
| Weight | 750g | 830g | 917g | 1000g |

OPTIONAL ACCESSORY

| | |
|-------------------|--------------|
| Calibration cable | IST-SD-CABLE |
|-------------------|--------------|

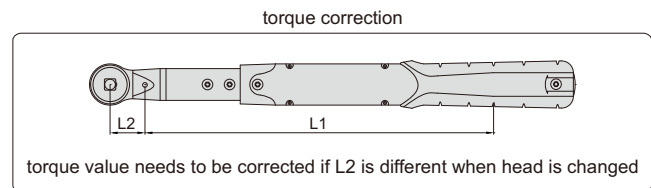
INTERCHANGEABLE HEAD DIGITAL TORQUE WRENCHES

OPTIONAL ACCURACY:
CLOCKWISE: ±1%
COUNTER-CLOCKWISE: ±2%



IST-2W135A

- Clockwise and counter-clockwise operation
- Unit: N.m, in.lb, ft.lb, kg.cm, degree
- Peak and track working modes
- Target torque value can be set, with audible and visible alarm:
 - Green LED light on and buzzer sounds when torque value is 90%~100% of target torque
 - Both green and red LED light on and buzzer sounds when target torque value is reached
- Power off in 5 minutes automatically without any operations
- Non-slip grip handle
- With damp record
- With overload record (once the torque reaches 110% of the maximum range)



SPECIFICATION

| Code | IST-2W30A | IST-2W135A | IST-2W200A | IST-2W340A | IST-2W410A |
|-------------------|---------------------------------------|------------|------------|------------|------------|
| Range | 6~30N.m | 27~135N.m | 40~200N.m | 68~340N.m | 82~410N.m |
| Accuracy | clockwise | ±2% | | | |
| | counter-clockwise | ±3% | | | |
| Resolution | 0.01N.m | 0.1N.m | 0.1N.m | 0.1N.m | 0.1N.m |
| Socket size (A×B) | 12×9mm | 12×9mm | 18×14mm | 18×14mm | 18×14mm |
| Arm length (L1) | 272.7mm | 287.7mm | 381.2mm | 501.2mm | 501.2mm |
| Power supply | 2xAA batteries, for 110 hours working | | | | |
| Weight | 1400g | 1570g | 2170g | 2320g | 2320g |

To be continued

TWO-WAY WIRELESS DIGITAL TORQUE WRENCHES

OPTIONAL ACCURACY:
CLOCKWISE: $\pm 1\%$
COUNTER-CLOCKWISE: $\pm 2\%$

TRANSMISSION DISTANCE
IS 300 METERS



IST-13W135A



two-way receiver

**INSPECTION
CERTIFICATE**



Torque wrench:

- The test results can be transmitted wirelessly to the computer and PLC
- Unit: N.m, in.lb, ft.lb, kg.cm
- Clockwise and counter-clockwise operation
- Peak and track working mode
- Can set tolerance with judgement in peak working mode
- 9 target torque values can be set, with audible and visible alarm:
 - Green LED light on and buzzer sounds when torque value is 80%~99.5% of target torque
 - Both green and red LED light on and buzzer sounds when torque value is over 99.5% of target torque
- Power off in 2 minutes automatically
- Non-slip grip handle
- With damp record
- With overload record (once the torque reaches 110% of the maximum range)

Two-way receiver:

- A two-way receiver can be connected with up to 10 wrenches at the same time, and the maximum transmission distance is 300 meters

Software:

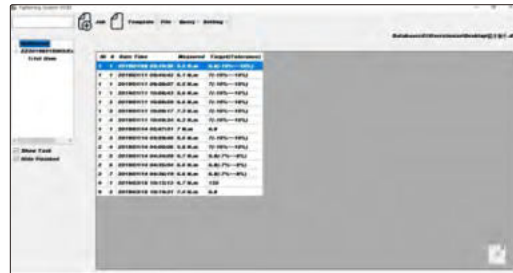
- In Windows10 system version 1709 or above
- Two operation mode:
 - Data transmission mode: wrench transmits actual torque value to software after operation
 - Program guidance mode: firstly set process on software (set sequence of tightening, select wrench and set torque values and tolerances). Then software shows which wrench the operator should use (indicator light of the selected wrench is on) and shows the target torque value, and serial number of the screw to be tightened (shows on the wrench); After the operation is finished, the actual torque value is sent to software.
- Can select whether the wrench only sends qualified data after operation (in accordance with the tolerance)
- Two data transmission modes: automatic or press button to send
- When the wrench is disconnected, data is stored in the wrench and automatically sent to computer after wireless connection
- The data in software can be printed or exported to Excel

TWO-WAY RECEIVER SPECIFICATION

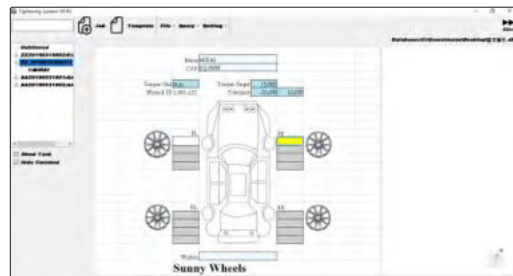
| Code | IST-13WREC | IST-13WREC-PLC |
|-------------------|--|----------------|
| Signal output to | computer | PLC |
| Working frequency | ISM433MHz (432.0~433.8MHz, adjustable) | |
| Power supply | power adapter, 24V, 0.5A | |
| Dimension | 200×108×31mm | |
| Weight | 500g | |

OPTIONAL ACCESSORY

| | |
|-------------------|--------------|
| Calibration cable | IST-SD-CABLE |
|-------------------|--------------|



Data transmission mode



Program guidance mode

SPECIFICATION

| Code | Range | Accuracy | Unit | Resolution | Square driver (L) | Working frequency | Power supply | Length | Weight |
|--------------|-------------|--|---------------------------|------------|-------------------|--|-------------------|--------|--------|
| IST-13W30A | 6~30N.m | clockwise: $\pm 2\%$ counter-clockwise: $\pm 3\%$ | N-m/ft-lb/ in-lb/kg-cm | 0.01N.m | 1/4" | ISM433MHz (432.0~433.8MHz, adjustable) | 2×AA batteries | 390mm | 760g |
| IST-13W60A | 12~60N.m | | | 0.01N.m | 3/8" | | | 390mm | 940g |
| IST-13W135A | 27~135N.m | | | 0.1N.m | 3/8" | | | 415mm | 940g |
| IST-13W200A | 40~200N.m | | | 0.1N.m | 1/2" | | | 530mm | 1340g |
| IST-13W340A | 68~340N.m | | | 0.1N.m | 1/2" | | | 650mm | 1540g |
| IST-13W1200A | 240~1200N.m | clockwise: $\pm 2.5\%$ counter-clockwise: $\pm 3.5\%$ | N-m/ft-lb | 1N.m | 1" | | | 1800mm | 9000g |
| IST-13W1500A | 300~1500N.m | | | 1N.m | 1" | | | 1800mm | 9000g |
| IST-13W2000A | 400~2000N.m | | | 1N.m | 1" | | | 1800mm | 10500g |

TYPE B OPTIONAL ACCURACY:
CLOCKWISE: $\pm 1\%$
COUNTER-CLOCKWISE: $\pm 2\%$

BLUETOOTH DIGITAL TORQUE WRENCHES (KEYBOARD SIGNAL)



BUILT-IN BLUETOOTH

INSPECTION
CERTIFICATE



IST-15W12A
Type A



IST-15W135A
Type B

Torque wrenches:

- Unit: in.lb, ft.lb, N.m, kg.cm
- Clockwise and counter-clockwise operation
- Peak and track working mode
- Can set tolerance with judgement in peak working mode
- 9 target torque values can be set, with audible and visible alarm:
LED lights up in sequence, and the buzzer gets louder and louder when torque value is 80%~99.5% of target torque
- Memory of 2000 results
- Power off in 2 minutes automatically
- Non-slip grip handle
- With overload record (once the torque reaches 110% of the maximum range)

Data transmission:

- Built-in Bluetooth 4.0 module, which can be connected with computers (with Bluetooth function), mobile phones, tablets and other devices
- Keyboard signal, can be transmitted to Excel, Word, TXT
- Transmission distance is 10 meters (no obstacles, no electromagnetic interference)
- Bluetooth connection and disconnection are respectively shown by indicator lights



transmission distance is 10 meters
(no obstacles, no electromagnetic interference)

SPECIFICATION

| Code | IST-15W06A | IST-15W12A | IST-15W20A | IST-15W30A | IST-15W135A | IST-15W200A | IST-15W340A |
|-------------------------|---------------------------------|------------|------------|-----------------|-------------|-------------|-------------|
| Type | A (short handle) | | | B (long handle) | | | |
| Range | 1.2~6N.m | 2.4~12N.m | 4~20N.m | 6~30N.m | 27~135N.m | 40~200N.m | 68~340N.m |
| Accuracy | clockwise | $\pm 2\%$ | | | | | |
| | counter-clockwise | $\pm 3\%$ | | | | | |
| Tolerance setting range | -20%~+20% (target torque value) | | | | | | |
| Resolution | 0.001N.m | 0.01N.m | 0.01N.m | 0.01N.m | 0.1N.m | 0.1N.m | 0.1N.m |
| Square driver (L) | 1/4" | 1/4" | 1/4" | 1/4" | 3/8" | 1/2" | 1/2" |
| Power supply | 2xAAA batteries | | | 2xAA batteries | | | |
| Length | 215mm | 215mm | 215mm | 390mm | 415mm | 530mm | 650mm |
| Weight | 750g | 750g | 750g | 760g | 940g | 1340g | 1540g |

OPTIONAL ACCESSORY

| | |
|-------------------|--------------|
| Calibration cable | IST-SD-CABLE |
|-------------------|--------------|